

APPENDIX 4:

Sites with existing biodiversity value and important trees in the parish

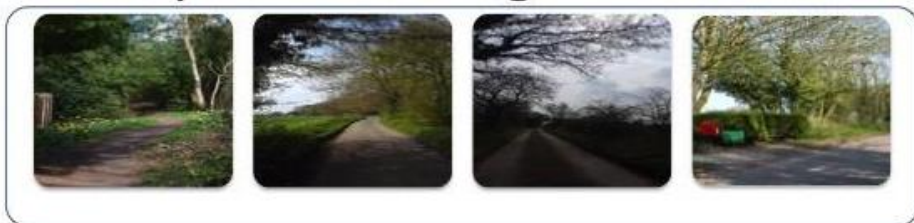
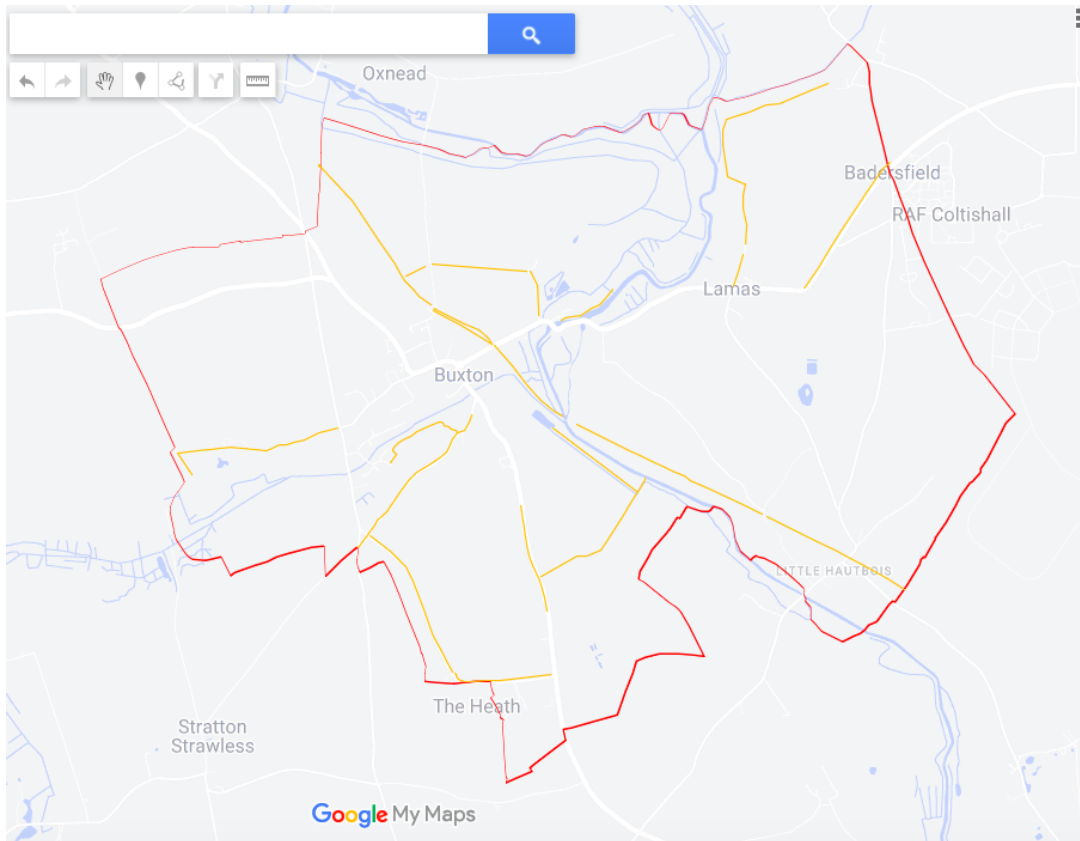


1. Important Hedgerows/Tree Lined Avenues

The following selection has been made on the basis of how significant a contribution they make to the local landscape, how old they are (approximately, based on old maps) and whether there are relatively mature trees included.

Important Hedgerows

Map showing the locality of important hedgerows (in yellow).



A. Footpath 9 Hedgerow

B. Back Lane Hedgerow

C. Sandy Lane Hedgerow, towards Brook Street

D. Sandy Lane Boundary Hedgerow, The Heath end



E. Bure Valley Path Buxton Station to Mill St Bridge,

F. Bure Valley Path, from Oxnead Path to Brampton Parish Border

G. Lammas Footpath 3, from the road to before Lammas Hall

H. Footpath 3 Bams, past Lammas Hall towards Stakebridge



J. Lammas water meadow hedgerow

K. Buxton Lodge Oak tree-lined avenue

L. Hautbois water meadow avenue of trees, past the pond

M. Oxnead Path tree-lined track

N. Oxnead Path from Bure Valley Railway Gate (Buxton corner)

O. Workhouse avenue of trees, along the Road

P. Coltishall Road avenue of trees



Q. Trees Dudwick Park. trees planted along the footpath.

Q. Tree lined path Dudwick, Park (second view)

R. Scottow Road Hedgerow, opposite Badersfield

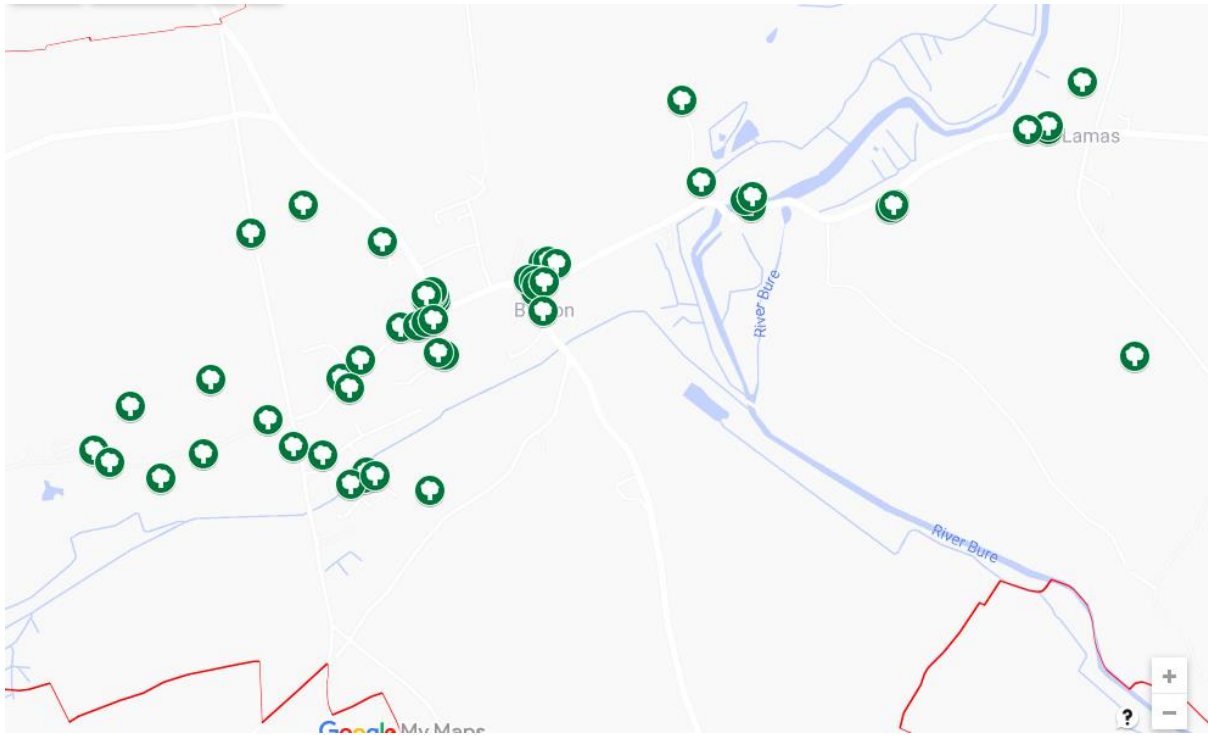
S. Stakebridge hedgerow corridor

T. Bure Valley Path Mill St to Pile Bridge, Buxton

V. Bure Valley Path Pile Bridge to Little Hautbois.








X. Bure Valley Path Hautbois Hall to the Parish Boundary

2. Old or Large Trees of Note



Map that shows the proximate location of all 57 important trees.

Memorial Trees

						
<p>1. Queen's Coronation Tree</p> <ul style="list-style-type: none"> • Sycamore, village centre, Buxton 	<p>2. Significant Tree</p> <ul style="list-style-type: none"> • Monkey Puzzle tree, St Andrews graveyard, Buxton 	<p>3. Diamond Jubilee Oak Tree</p> <ul style="list-style-type: none"> • Grounds of the Scout Hut at Balay Park, Buxton 	<p>4. Platinum Jubilee Tree</p> <ul style="list-style-type: none"> • Hornbeam at Balay Park entrance planted by the Parish Council and Women's institute (WI), Buxton 	<p>5. Millennial Tree</p> <ul style="list-style-type: none"> • Bulwer Green Oak and bench, Buxton 	<p>6. Women's Institute Millennium Red Oak,</p> <ul style="list-style-type: none"> • St. Andrews graveyard, Buxton 	<p>7. Memorial Tree (personal)</p> <ul style="list-style-type: none"> • Daisy Middleton, planted by six village associations in her memory, St Andrews graveyard, Buxton

Mature Trees, Buxton, Lammas and Little Hautbois

					
<p>8. Bulwer Green Plane Tree</p> <ul style="list-style-type: none"> • TPO, Woodland Trust noted, Broadland District Council registered 	<p>9. Bulwer Green Yew Tree</p> <ul style="list-style-type: none"> • TPO, approx. 40 years old 	<p>10. Bulwer Beech Tree</p> <ul style="list-style-type: none"> • Bulwer Green, with a TPO 	<p>11. Levishaw Close Beech Tree</p> <ul style="list-style-type: none"> • TPO, Woodland Trust noted 	<p>12. Old Levishaw Manor Boundary Oak Tree</p> <ul style="list-style-type: none"> • TPO, Back Lane hay field 	<p>13, 14 & 15. Lime Trees (3 of 4)</p> <ul style="list-style-type: none"> • Planted by the Scouts, Aylsham Road, Buxton

	
<p>16. Lime Tree 4. (4 of 4)</p> <ul style="list-style-type: none"> • Planted by Buxton Scouts • Aylsham Road corner, Buxton 	<p>17 & 18. Silver Birch Trees</p> <ul style="list-style-type: none"> • Aylsham Road corner Buxton, opposite the Lime trees



19. Cedar Tree
 • Dudwick Hall grounds., Dudwick Park, Buxton

20. Great Redwood Tree
 • Dudwick Park, Buxton

21. Hornbeam Tree
 • Dudwick grounds entrance
 • Dudwick Park, Buxton

22. Holm Oak Tree,
 • Dudwick Hall entrance,
 • Dudwick Park, Buxton

23. Boundary Oak Tree,
 • From the path look to the right, on the park boundary,
 • Dudwick Park, Buxton

24. Recumbent Oak Tree,
 • along the footpath through Dudwick,
 • Dudwick Park, Buxton

25 Twisted Oak Tree
 • Second paddock left of the path,
 • Dudwick Park Buxton



26. Reading Room Oak
 • 16 Brook St, Buxton

27. Lion Road Oak Tree
 • Opposite Lion Farm,
 • Along Lion Road, Buxton

28, 29, 30. Buxton Mill Willow Trees
 • Back of Buxton Mill, along the River. Bure, Buxton

31 & 32. Oak Tree lined Avenue.
 • Buxton Lodge Lane

33. Feoffee Cottage Norway Maple Tree
 • In front of the garden on the boundary

34. Norway Maple Tree 1,
 • On the right hand corner of Church Close entrance from Crown Road. Buxton

35. Norway Maple Tree 2,
 • On the left hand corner of Church Close entrance from Crown Road, Buxton



36 Cherry Trees, Church Close

- Left side of Church Close looking up to the shop, Planted by the Scouts

37. Silver Birch Tree

- Plant a tree in 83, the Scouts. Right side of Church Close, opposite the cherry trees

38. Double Hawthorn Tree

- Crown Road, planted by the Scouts

39. Little Haultbois Ancient Oak

- Large oak tree in a field boundary opposite Folly Cottages, Little Haultbois

40. Lammas Copper Beech Tree

- To the left of the Church looking from midway along the footpath from Lammas Hall.

41 & 42. Lammas Burial Ground Yews

- Along the path to the Church, through the gate.

43. Bure House Horse Chestnut Tree

- Along the Street Lammas, just before Bure House gate, on the right hand side.



44, 45, 46 & 47. Friends Meeting House Yews, Lammas

- Back of the House, in the old Quaker burial grounds

48. Churchyard Sycamore Tree, Buxton

- Through the gate of the Church and to the left at the boundary.

49, 50, 51 & 52. Churchyard Yews, Buxton

- Just outside the front of the Church are several large Yews.

53. Linden Tree 1, Crown Road

- Along Crown Road, the Lime Tree on the left hand side just after Mead Close entrance.

54. Linden Tree 2, Crown Road.

- Further, on the left is the other Lime Tree along Crown Road.

55. Copper Beech Tree, Crown Road

- Opposite Sunny-meade, in the front garden is a large Copper Beech Tree.

56 and 57. Two Hornbeam Trees, Village Hall boundary

- Young trees along fence opposite the Village Hall play ground.

3. Tree Preservation Orders

Individual Trees, Areas, and Conservation Areas

TPOs offer a legal status to the Protection of Trees and can be on either individual ones or cover an area. The Broadland District Council maps provide an idea of the location.

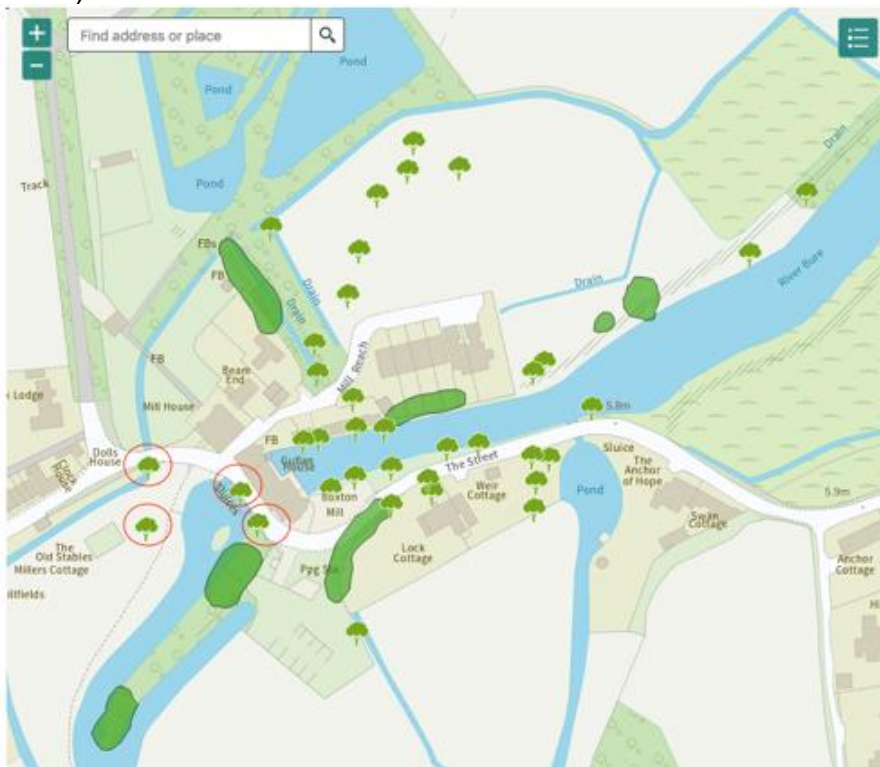
Buxton Trees with TPOs, an example

Bulwer Green Plane tree, with a girth of 6.5 metres, it is one of the finest examples of its kind in the District. It may have been part of the original Levishaw Manor estate



The TPO maps for Broadland District Council are found at <https://www.southnorfolkandbroadland.gov.uk/trees-hedges/protected-trees/2>

Below shows a similar map for Lammas and Buxton areas where some of the trees have been damaged in storms, cut down and not been replaced (shown in a red circle)





Conservation Area

The following map shows the location of the part of the Badersfield Conservation area that is in Broadland and our Parish. All trees are effectively under a TPO in this area.



Old Landscapes with Documented History

These landscapes do not have a legal status currently, but their existence has been documented throughout history. They are older than many of the buildings with Grade II designation.

Dudwick Park

A number of notable trees have been submitted to the Woodland Trust register, including the largest redwood.



No TPOs exist for trees here or for the area as it was not deemed under threat, but it is one of the oldest landscapes, noted in the open parkland with a public footpath through the middle of it



In 1198 the Dudwick estate was owned by Lord de Dudwick, who had the right, given to him by the King, to hang criminals; the gallows stood in the field beside Sandy Lane. Dudwick Park was once populated by a herd of red deer, believed to be the oldest herd in Norfolk, these are said to have escaped in WWII to roam local woods. Locally Dudwick is sometimes referred to as the Deer Park.

Dudwick Park, was owned by the Sewell family (related to the Wrights) and was probably the inspiration for 'Birtwick Park' in Anna Sewell's book: *Black Beauty*. It is said that Anna learned to ride while staying with her grandparents who owned a farm on the Dudwick estate.

www.literarynorfolk.co.uk/buxton.htm

Water Meadows

Meadows in this Parish were documented as early as 1080 as part of the little Domesday Book. The water meadows as we know them may have been created as early as 1654¹ when the becks and drainage dykes were logged as being created and maintained as part of the Oxnead estate accounts.

¹ D. Yaxely, 2015, Oxnead 1654-56: Accounts of Oxnead Hall, Home of Sir William Paston



9 Acres Plantation

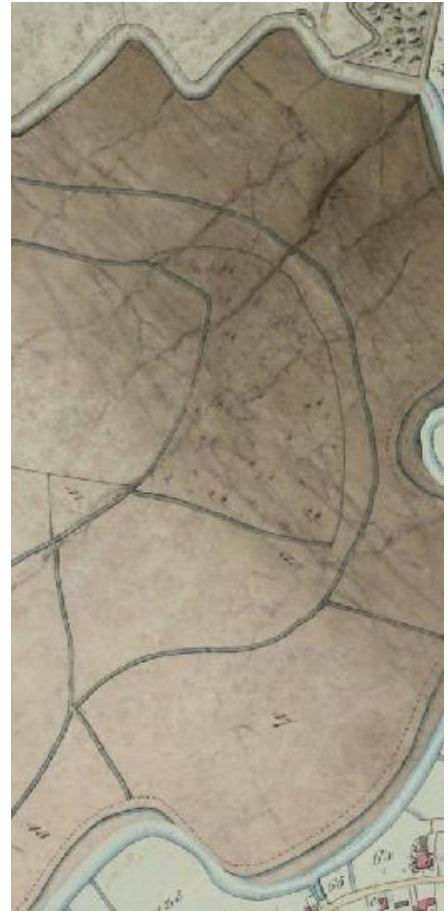
9 Acres Plantation is a small woodland on the Lammas water meadows close to Oxnead. It formed part of the Oxnead manor estate, which extended much further than today. This plantation is mentioned by name in the Oxnead Estate Accounts of 1654-56 kept by William Paston. It is also identified from the Tithe maps (1836-1850) and the first Ordnance Survey map of 1879-88. The area is only accessible by footpath, so it is not surprising that Faden's map of 1797 does not show it.





Above is a photo of 9 Acre Plantation taken from the first Ordnance Survey in 1876.

The second photo to the left is an even earlier version from the Tithe map of the 1836 period. Nine Acres is just showing some shading.



4. In Memory

The following areas have been identified as areas of memorial or to commemorate an occasion, often related to the Royal Family.



Buxton Mill Stone
• Time Capsule 1977, Women's Institute, Village triangle



Daffodils on triangle at the Mill Stone, Buxton
• Millar – Finch Family Memorial Planting



Balay Park, Buxton
• Time Capsule at the Scouts Hut



Lammas Village Signs (2)
• Iron signs at the Boundaries of Buxton Mill and between Lammas and Badersfield



Blue Plaque
• Sewell Family, Mill St, Buxton



Commemorative Bell
• Queens Platinum Jubilee Bell, St Andrews, Buxton



Gravestone, the Street, Lammas
• Anna Sewell grave at Friends Meeting House, Lammas



Trees at Entrance of Balay Park, Buxton
• Chestnuts and Silver birch